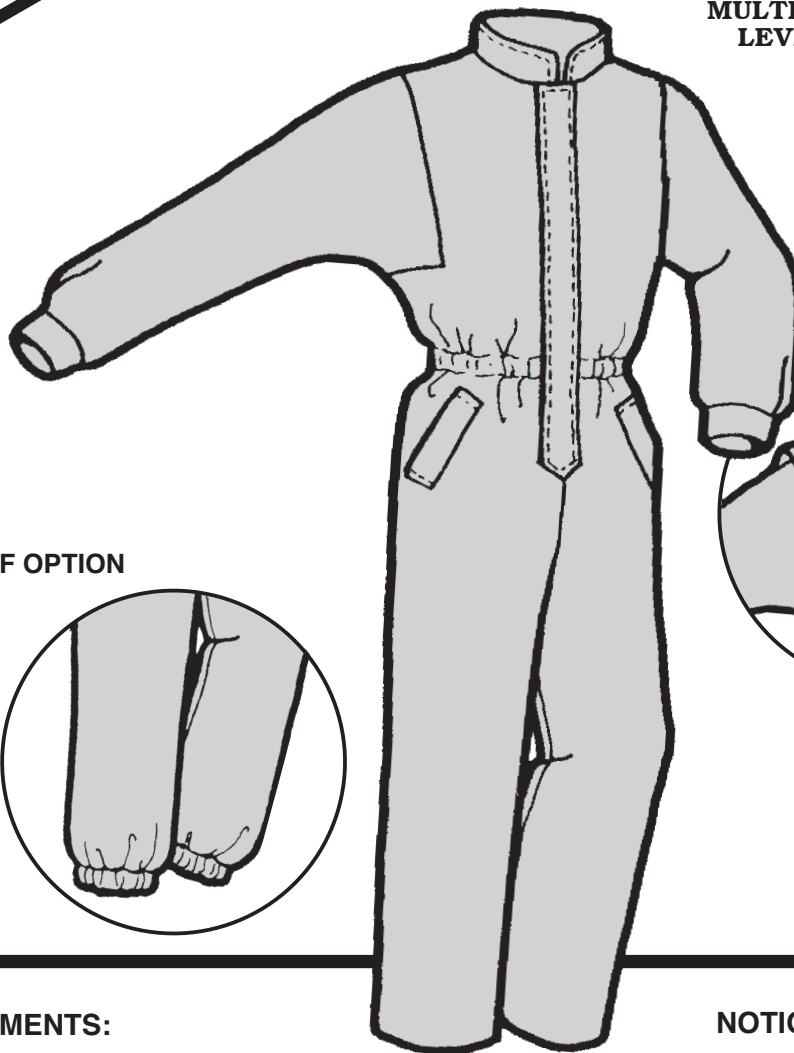
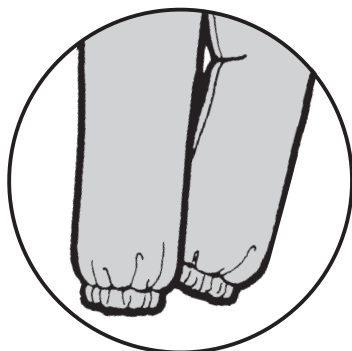


# CHILDREN'S BLACK BUTTE JUMPSUIT

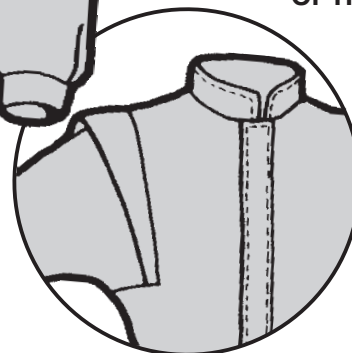
MULTI-SIZED PATTERN  
LEVEL 3—MEDIUM



with  
CUFF OPTION



with  
SHOULDER  
OPTION



## MEASUREMENTS:

**IMPORTANT:** When selecting pattern size, take measurements over clothing that will be worn under finished garment.

SIZE	4	6	8	10	12
Chest .....	23"	25"	27"	28 <sup>1</sup> / <sub>2</sub> "	30"
Waist .....	21"	22"	24"	25"	26"
Hip .....	24"	26"	28"	30"	32"
Back Waist Length ...	9 <sup>1</sup> / <sub>2</sub> "	10 <sup>1</sup> / <sub>2</sub> "	12"	12 <sup>3</sup> / <sub>4</sub> "	13 <sup>1</sup> / <sub>2</sub> "

## FABRIC:

	4-6	8-10	12
Outer Fabric			
.....60"	2 yd (1.8 m)	2 <sup>1</sup> / <sub>2</sub> yd (2.3 m)	2 <sup>3</sup> / <sub>4</sub> yd (2.5 m)
.....45"	2 <sup>7</sup> / <sub>8</sub> yd (2.6 m)	3 yd (2.7 m)	3 <sup>3</sup> / <sub>4</sub> yd (3.5 m)
Interfacing .....	3/8 yd (.34 m)	3/8 yd (.34 m)	3/8 yd (.34 m)

## NOTIONS:

- 1..... Zipper:  
16" (size 4),  
18" (size 6-8),  
20" (size 10-12)
- 1..... Locking Zipper Pull
- 1<sup>1</sup>/<sub>2</sub> yd (1.4 m).... 3/4" Elastic
- 1 ..... All-polyester Thread

## SUGGESTED FABRICS:

**Main Fabric** - Tightly woven Lightweight Waterproof, Waterproof Breathable, or Water-Repellent Fabric.

**Interfacing** - 3.1 oz. Needlepunch.