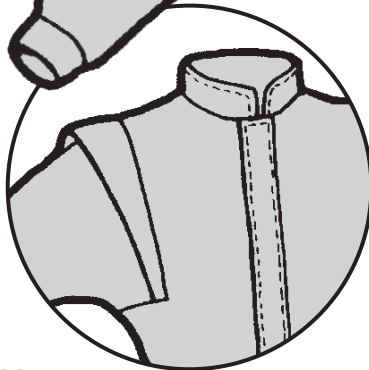
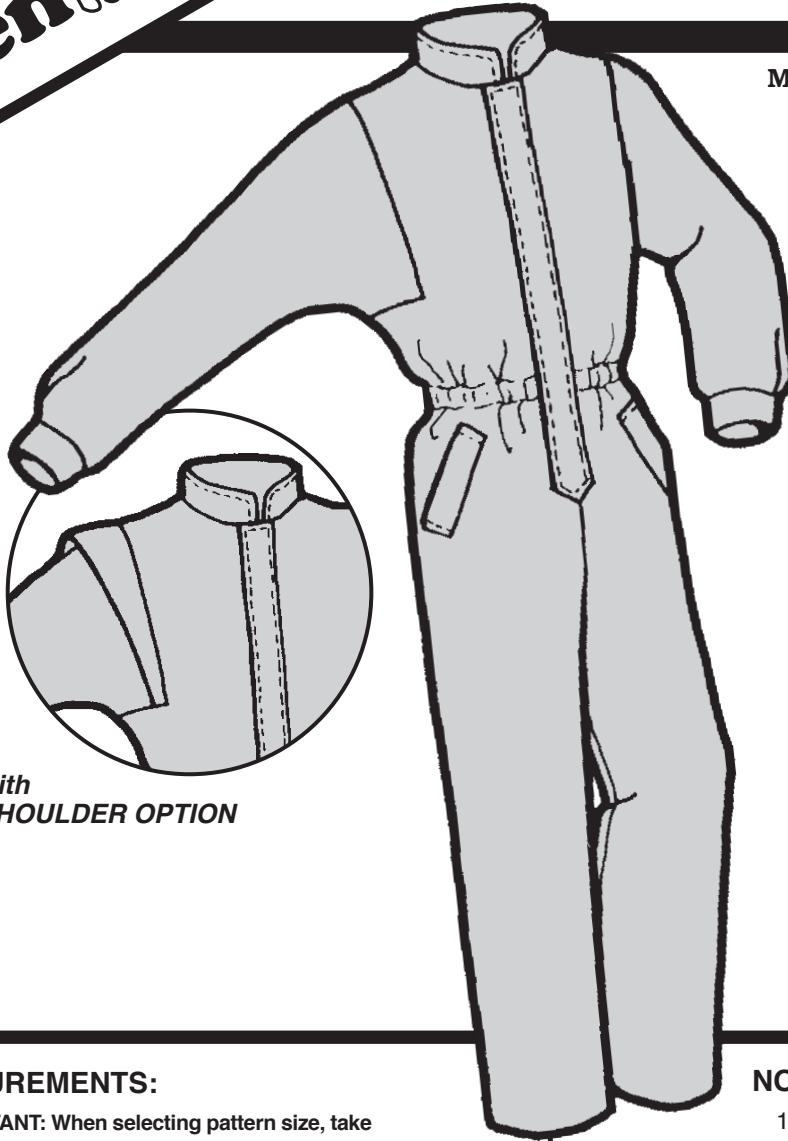
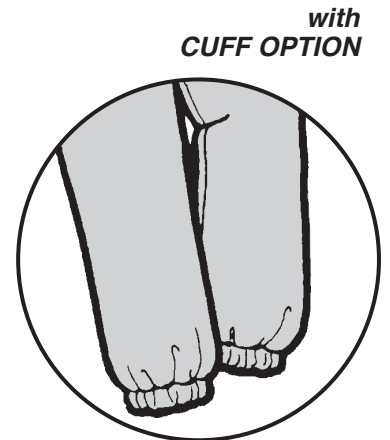


**WOMEN'S
BLACK BUTTE JUMPSUIT**

**MULTI-SIZED PATTERN
LEVEL 3—MEDIUM**



*with
SHOULDER OPTION*



*with
CUFF OPTION*

MEASUREMENTS:

IMPORTANT: When selecting pattern size, take measurements over clothing that will be worn under finished garment.

SIZE	6	8	10	12	14	16	18
Bust	30 ¹ / ₂ "	31 ¹ / ₂ "	32 ¹ / ₂ "	34"	36"	38"	40"
Waist	23"	24"	25"	26 ¹ / ₂ "	28"	30"	32"
Hip	32"	33 ¹ / ₂ "	34 ¹ / ₂ "	36"	38"	40"	42"
Back Waist Length	15 ¹ / ₂ "	15 ³ / ₄ "	16"	16 ¹ / ₄ "	16 ¹ / ₂ "	16 ³ / ₄ "	17"

FABRIC:

Outer Fabric	6-10	12-14	16-18
.....60"	3 ³ / ₈ yd (3.1 m)	3 ¹ / ₂ yd (3.2 m)	3 ¹ / ₂ yd (3.2 m)
.....45"	4 ¹ / ₄ yd (3.9 m)	4 ¹ / ₂ yd (4.1 m)	4 ⁷ / ₈ yd (4.5 m)
Interfacing	1/2 yd (.46 m)	1/2 yd (.46 m)	1/2 yd (.46 m)

NOTIONS:

- 1..... Zipper:
22" (size 6-14), or
24" (size 16-18)
- 1..... Locking Zipper Pull
- 2 yd (1.8 m)..... 3/4" Elastic
- 1..... All-polyester Thread

SUGGESTED FABRICS:

Main Fabric - Tightly woven Lightweight Waterproof, Waterproof Breathable, or Water-Repellent Fabric.

Interfacing - 3.1 oz. Needlepunch.