

Chemisier sans manches avec col à revers, coupe relaxe, ourlet arrondi, pinces (tailles adultes seulement) et boutonnage pleine longueur au devant. **A:** Emmanchure finie avec biais, poches plaquées à la poitrine **B:** Avec frison et biais à l'emmanchure, cravate.

Sleeveless button-down shirt with collar, relaxed fit through waist and hips, bust dart (adult sizes only), rounded hem, back yoke, forward shoulder seam and box pleat at the back. **A:** With bound armhole, chest pockets. **B:** With partially bound armhole, shoulder ruffle and tie.

MESURES DU CORPS (FILLES) - BODY MEASUREMENTS (GIRLS)

Âge approximatif - Approximate age	2	3	4	5	6	7	8	9	10	11	12	13	
Tailles européennes - European sizes	92	98	104	112	119	127	135	142	146	150	152	155	
TAILLE JALIE - JALIE SIZES	F	G	H	I	J	K	L	M	N	O	P	Q	
	1 TOUR DE POITRINE FULL BUST	21"	22"	23"	24"	25"	26"	27"	28"	29"	30"	31"	32"
		53 cm	56 cm	58 cm	61 cm	64 cm	66 cm	69 cm	71 cm	74 cm	76 cm	79 cm	81 cm
	2 TOUR DE TAILLE NATURAL WAIST	20"	20 1/2"	21"	21 1/2"	22"	22 1/2"	23"	23 3/4"	24 1/2"	25 1/4"	25 3/4"	26 1/2"
		51 cm	52 cm	53 cm	55 cm	56 cm	57 cm	58 cm	60 cm	62 cm	64 cm	66 cm	67 cm
3 TOUR DES HANCHES FULL HIPS	22"	23"	24"	25"	26"	27"	28"	29 1/2"	30 1/2"	32"	33"	34 1/2"	
	56 cm	58 cm	61 cm	64 cm	66 cm	69 cm	71 cm	74 cm	78 cm	81 cm	84 cm	87 cm	
4 TRONC (DEVANT+DOS) TORSO (FRONT+BACK)	35"	37"	39"	41"	43"	45"	47"	48 3/4"	50 1/2"	52"	53 3/4"	55 1/2"	
	89 cm	94 cm	99 cm	104 cm	109 cm	114 cm	119 cm	123 cm	128 cm	132 cm	137 cm	141 cm	

TISSU REQUIS - YARDAGE

	45"	MODÈLES A/B (COMPLÉT)	1 1/2 yd	1 1/2 yd	1 1/2 yd	1 1/2 yd	1 3/4 yd	1 3/4 yd	1 3/4 yd	2 yd	2 yd	2 yd	2 yd	2 yd
	115 cm	VIEWS A/B (ALL PIECES)	1.15 m	1.20 m	1.30 m	1.35 m	1.45 m	1.50 m	1.60 m	1.65 m	1.70 m	1.75 m	1.75 m	1.80 m
	54"	MODÈLES A/B (COMPLÉT)	1 1/4 yd	1 1/4 yd	1 1/4 yd	1 1/2 yd	1 1/2 yd	1 1/2 yd	1 1/2 yd	1 3/4 yd	1 3/4 yd	1 3/4 yd	1 3/4 yd	2 yd
	137 cm	VIEWS A/B (ALL PIECES)	1.00 m	1.05 m	1.10 m	1.15 m	1.20 m	1.25 m	1.30 m	1.40 m	1.50 m	1.55 m	1.60 m	1.65 m
45" / 54"	COL SEULEMENT	1/2 yd						1/2 yd						
115 / 137 cm	COLLAR ONLY	0.40 m						0.50 m						

TISSUS CONSEILLÉS Étoffe tissée légère (lin, chambray, challis de rayonne, crêpe de chine, tencel lyocell)
RECOMMENDED FABRICS Lightweight fabrics (linen, linen blends, chambray, rayon challis, crepe de chine, tencel lyocell)

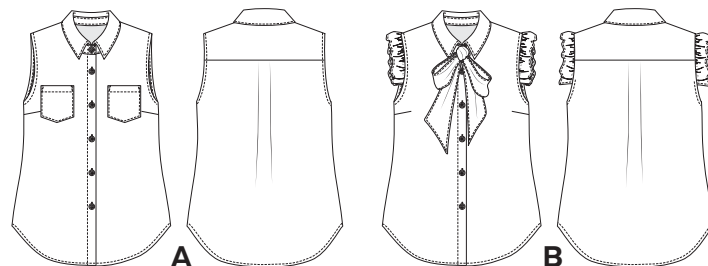
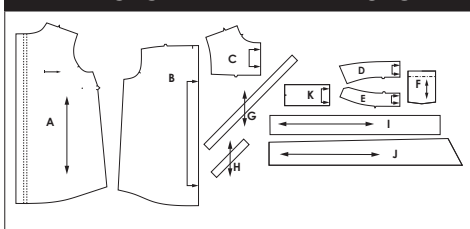
MESURES DU CORPS (FEMMES) - BODY MEASUREMENTS (WOMEN)

Taille US APPROX. US size	2	4	6	8	10	12	14	16	18	20	22	24				
Prêt-à-porter APPROX. RTW size	XS		S		M		L		XL		2XL					
Tailles euro - European sizes	34	36	38	40	42	44	46	48	50	52	54	56				
TAILLE JALIE - JALIE SIZES	R	S	T	U	V	W	X	Y	Z	AA	BB	CC	DD	EE	FF	GG
1 TOUR DE POITRINE FULL BUST	33"	34"	35"	36"	37"	38"	39"	40"	41 1/2"	42 3/4"	44"	45 1/2"	46 3/4"	48 1/4"	49 1/2"	51"
	84 cm	86 cm	89 cm	91 cm	94 cm	96 cm	99 cm	102 cm	106 cm	109 cm	112 cm	116 cm	119 cm	123 cm	126 cm	130 cm
2 TOUR DE TAILLE NATURAL WAIST	27"	28"	29"	30"	31"	32"	33"	34"	35 1/4"	36 1/2"	37 3/4"	39"	40 1/4"	41 1/2"	42 3/4"	44"
	69 cm	71 cm	74 cm	76 cm	78 cm	81 cm	84 cm	86 cm	89 cm	93 cm	96 cm	99 cm	102 cm	105 cm	109 cm	112 cm
3 TOUR DES HANCHES FULL HIPS	36"	37"	38"	39"	40"	41"	42"	43"	44 1/2"	45 3/4"	47"	48 1/2"	49 3/4"	51 1/4"	52 3/4"	54"
	91 cm	94 cm	96 cm	99 cm	102 cm	104 cm	106 cm	109 cm	112 cm	116 cm	119 cm	123 cm	126 cm	130 cm	134 cm	137 cm
4 TRONC (DEVANT+DOS) TORSO (FRONT+BACK)	57 1/4"	59"	59 1/2"	60"	60 1/2"	61"	61 1/2"	62"	62 3/4"	63 3/4"	64 1/4"	65 1/2"	66 1/4"	67 1/4"	68 1/4"	69"
	145 cm	150 cm	152 cm	155 cm	157 cm	160 cm	161 cm	159 cm	161 cm	163 cm	165 cm	167 cm	169 cm	171 cm	173 cm	175 cm

TISSU REQUIS - YARDAGE

45"	MODÈLES A/B (COMPLÉT)	2 1/4 yd	2 1/4 yd	2 1/4 yd	2 1/4 yd	2 1/2 yd	2 1/2 yd	2 1/2 yd	2 1/2 yd	2 1/2 yd	2 1/2 yd	2 3/4 yd	2 3/4 yd	2 3/4 yd	2 3/4 yd	2 3/4 yd
115 cm	VIEWS A/B (ALL PIECES)	1.85 m	1.90 m	1.95 m	2.00 m	2.05 m	2.10 m	2.10 m	2.15 m	2.20 m	2.25 m	2.25 m	2.30 m	2.35 m	2.40 m	2.45 m
54"	MODÈLES A/B (COMPLÉT)	2 yd	2 yd	2 yd	2 yd	2 yd	2 1/4 yd	2 1/4 yd	2 1/4 yd	2 1/4 yd	2 1/4 yd	2 1/4 yd	2 1/4 yd	2 1/4 yd	2 1/4 yd	2 1/4 yd
137 cm	VIEWS A/B (ALL PIECES)	1.70 m	1.70 m	1.75 m	1.75 m	1.80 m	1.80 m	1.85 m	1.85 m	1.90 m	1.90 m	1.95 m	1.95 m	1.95 m	2.00 m	2.00 m
45"/54"	COL SEULEMENT	1/2 yd						1/2 yd								
115/137 cm	COLLAR ONLY	0.55 m						0.60 m								

PIÈCES - PATTERN PIECES



MERCERIE - NOTIONS

BOUTONS DE 10-12 mm 3/8" - 1/2" BUTTONS	F-J	K-O	P-R	S-GG
	5	6	7	7 / 8
ENTOILAGE THERMOCOCCANT FUSIBLE INTERFACING	F - GG			
	30"			
	75 cm			

